

## Enjoying the countryside

Hampshire boasts an extremely rich and diverse countryside and an extensive network of public paths which provide a range of opportunities for enjoying the great outdoors. Rights of way are linear routes, often ancient trackways through deep countryside; there are over 3,000 miles of these in Hampshire. The map in this leaflet may also show access to other areas of land, such as commons, woodland, recreation grounds or conservation areas, and your Parish Council may know of guided walks or events. Many people will be able to reach the countryside within a few hundred yards of home and the plants, trees and views along the same paths often change dramatically through the seasons. We hope that this leaflet will encourage you to explore and enjoy your local countryside.

## Using the local countryside

We ask you to be responsible when using the paths in the area, and to check which paths you are entitled to use (for example, cyclists cannot use public footpaths and when on Forestry Commission land cyclists must stay on the waymarked cycle routes). Wheelchairs, pushchairs and dogs are allowed on all types of rights of way and areas with public access.



To ensure that the countryside is protected for future generations be sure to:

- Be safe – wear suitable clothing and shoes and take care when crossing roads
- Plan ahead and follow any signs – keep away from any forestry work
- Close gates behind you unless they have been fastened open
- Take your litter home, and don't light fires
- Keep dogs under close control
- Respect sites of ground-nesting birds

## Maintaining countryside acces

Hampshire County Council – public rights of way:

- Ensures that rights of way are not obstructed
- Maintains path surface, some bridges and signs paths
- Authorises stiles and gates
- Keeps the definitive map up-to-date

Forestry Commission – Crown Lands:

- Maintains gates, stiles and bridges
- Acts as contact point for questions about ponies and other grazing stock
- Signposts and waymarks cycle routes



Private Landowners:

- Keep back side growth and overhanging vegetation
- Maintain most stiles and gates
- Should not obstruct paths or deter use of them

**Bishop's Waltham has a thriving town centre with small independent shops, cafes and restaurants. The High Street leads to the attractive St Peter's Street and thus to St Peter's Church which has its origins from the 12th Century.**

The Palace, now in ruins, was home to the Bishops of Winchester in medieval times. The grounds, which include the Bishop's Waltham Museum, are open to the public.

The River Hamble rises on The Moors, a well-managed wildlife area where the chalk downs and coastal plain meet. Other wildlife areas are Dundry Meadow, Runnydown Copse and Claylands. There are numerous public footpaths in the town's surrounding countryside. Each of the three described walks extends to the parish boundary where there is a popular public house that serves food daily. Booking is advisable at weekends. All three walks have stiles and can be muddy in winter.

There is a circular easy-access walk in Bishop's Waltham that links Priory Park with the Railway Footpath. This is shown on the map.



### Useful Contacts

**Bishop's Waltham Parish Council**

01489 892323

[www.bishopswaltham-pc.gov.uk](http://www.bishopswaltham-pc.gov.uk)

Email: [parishclerk@bishopswaltham-pc.gov.uk](mailto:parishclerk@bishopswaltham-pc.gov.uk)

**Robin Hood:**

01489 860229

**Brushmakers Arms:**

01489 860231

**Hampshire Bowman:**

01489 892940

### Refreshments in Bishop's Waltham

**There are several pubs, restaurants and coffee shops in the town**

### Public Transport

**Traveline:** 0871 200 22 33

**Stagecoach:** 0845 121 0190

**(No. 69) Winchester and Fareham:**

**Xelabus:** 02380 644715

**(No. X9) Eastleigh (No. X10) Southampton**

**No bus services on Sundays and Bank Holidays**

### Countryside Information

**Rights of way maps online**

[www.hants.gov.uk/maps/path](http://www.hants.gov.uk/maps/path)

**Enjoying Hampshire's countryside**

0845 603 5636

[www.hants.gov.uk/countryside](http://www.hants.gov.uk/countryside)





Disclaimer: Published by Bishop's Waltham Parish Council and Hampshire County Council, through the Small Grants Scheme Countryside Access. The areas described have been put forward by the Parish Council. Whilst the County Council endeavours to maintain all rights of way to a high standard, additional resources are not allocated to routes promoted in this leaflet. Every care has been taken in the preparation of this leaflet, but Hampshire County Council is unable to accept any responsibility for accident or loss resulting from following the information provided.

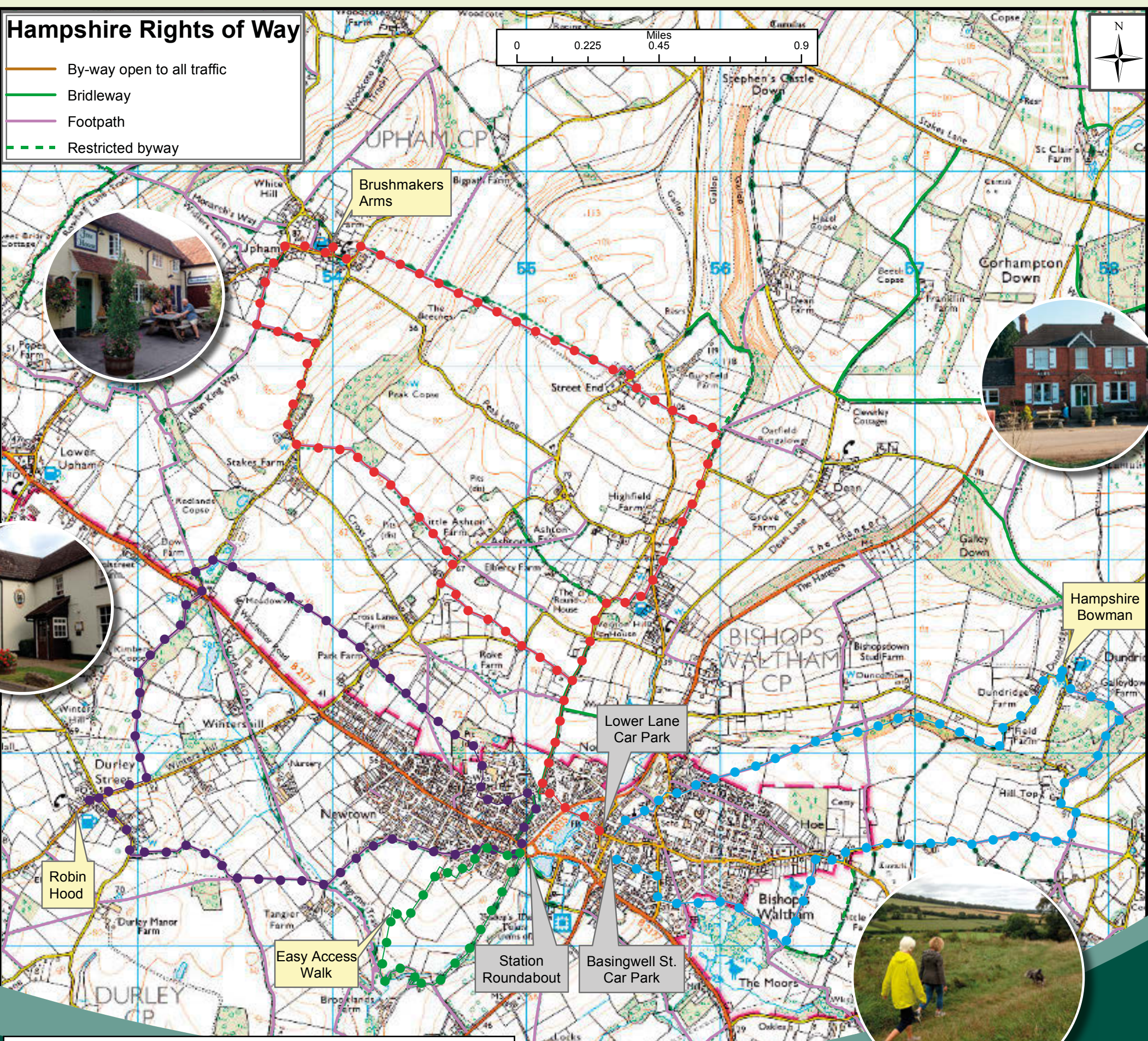
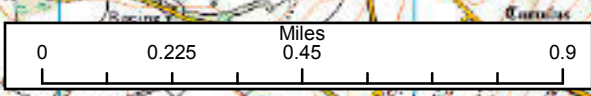
## Pub Walks Around Bishop's Waltham





# Hampshire Rights of Way

-  By-way open to all traffic
-  Bridleway
-  Footpath
-  Restricted byway



Contains Ordnance Survey data © Crown copyright and database right 2012

## Robin Hood Walk

4½ miles; 2 hours; 12 stiles

**This walk to the west of the town circles Winters Hill and crosses Park Lug, the medieval deer park boundary**

From Station Roundabout follow Winchester Road for 50m then turn R into Pondsides Lane. Turn L at road, through bollards and R at T-junction. Enter Claylands Local Nature Reserve through kissing gate on L. Follow zig-zag path up hill to T-junction and turn L. At top, before bench, exit through gate and continue along field with hedge to R across 4 stiles. Cross lane to path at L of Park Farm driveway and into field. At electricity poles, maintain direction keeping hedge to R, crossing 3 fields and across stile and ponds to hedge and turn L. Turn L at road and then cross main road diagonally R to driveway and continue straight on footpath. Follow through to busy road. Turn R to The Robin Hood.

Exit R from pub and R at Manor Road. Turn L into driveway of last house and follow footpath. Follow field edges and 100m past gate, turn L across stile in hedge (Park Lug). Follow path diagonally across 3 fields and 2 stiles to lane. Turn L and after 300m, at driveway to paddock, enter footpath through gate, passing beside fields and then between gardens. Cross road and turn L at next road, then L to return to Station Roundabout.

## Alternative routes

Website address for cycling/horse riding routes in the area  
 Cycling: a forum of tested routes at [www.cycle-route.com](http://www.cycle-route.com) or trails submitted by individuals at [www.mapmyride.com](http://www.mapmyride.com)  
 Horse Riding: [www.visit-hampshire.co.uk/things-to-do/outdoor-activities/horse-riding](http://www.visit-hampshire.co.uk/things-to-do/outdoor-activities/horse-riding)

## The Brushmakers Arms Walk

6 miles; 2½ hours; 11 stiles

**This is an undulating walk to Upham, north of Bishop's Waltham**

From Lower Lane car park take passage between houses and continue across pond and main road to Langton Road. After 150m turn R into bridleway. Keep straight over crossroads to Shipcote Lane. In 300m take footpath to R. Cross road into Primrose Terrace and follow footpath to road. Turn R for 200m to join restricted byway. After 150m turn L over double stile. Cross road and stiles and follow path diagonally R across field. Cross road into Street End Farm and follow signs, then continue straight for over 1000m. Aim to R of farm buildings. Turn L at road then R, passing pond on L to The Brushmakers Arms on R.

Turn R out of pub and R at T-junction. Follow sign to Durley. After 120m follow footpath on L at Oak Close. At cross tracks take path to L through farm gate. At road turn R. At bottom of hill take footpath bearing L across field and into wood. Continue through edge of wood then alongside fields to road. Turn R and after 200m turn L to footpath over stile. Follow path along R side of field, then a double stile, and head diagonally R to corner of field. Cross road and continue along footpath. At track, turn R and follow downhill to return to Bishop's Waltham.

## The Hampshire Bowman Walk

5 miles; 2 hours; 5 stiles

**This walk to the east of the town includes 2 nature reserves, The Moors and Dundridge Meadow**

From Basingwell Street car park pass chapel up Little Shore Lane, R at T-junction, then second L at Cricklemede to gate on R into Moors. Take path diagonally L and enter woods through kissing gate. Keep straight for 500m. Turn L at T-junction on R side of 2 meadows, then track to road. Turn R and after 200m L into West Hoe Lane. After 750m take footpath diagonally L across field. Bear R then across field by cattle trough. At 4-way path junction turn L to road and turn L to follow it to Dundridge. At brow of hill take footpath to R. At bottom of hill bear R then L over stile and follow path through farm buildings. At road turn R to The Hampshire Bowman.

Turn L out of pub and follow road R signed B Waltham. After 450m turn L up track by Field Farm. After 400m turn R over stile and continue through wood to end. Enter meadow and at second seat bear L to field and turn R across 2 fields. Exit through gate and follow path to R then Colville Drive downhill to T-junction. Turn L, then R into Maypole Green, and pass through Churchyard into St Peter's Street and return to car park.