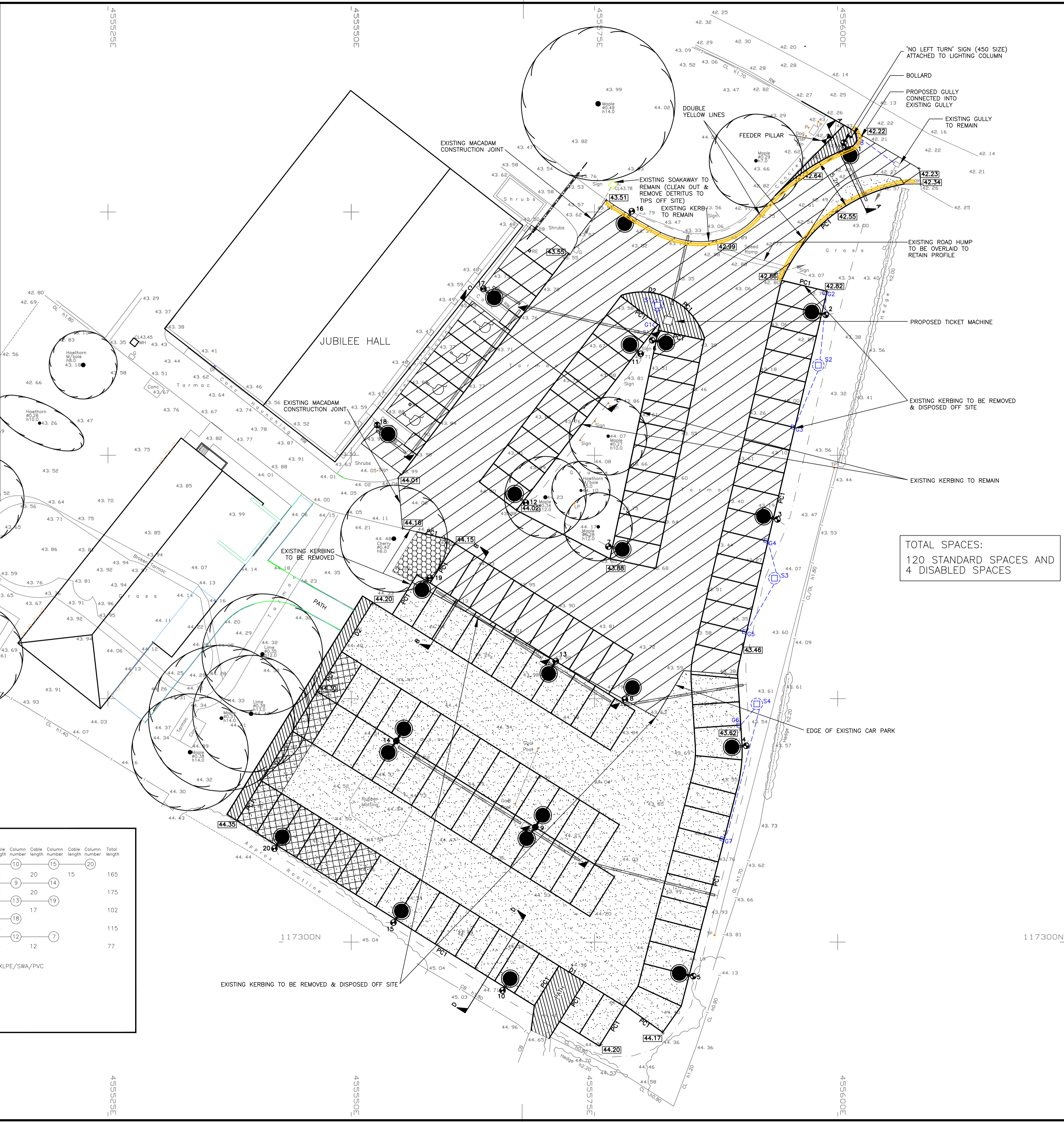


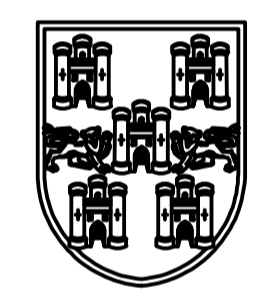
- LEGEND**
- ROAD CONSTRUCTION CONSISTING OF:
    - 30mm AC10 SURFACE COURSE (10mm NOMINAL STONE SIZE)
    - 60mm AC20 BINDER COURSE (20mm NOMINAL STONE SIZE)
    - 100mm AC32 BASE (32mm NOMINAL STONE SIZE)
    - 200mm TYPE 1 GRANULAR SUB-BASE MATERIAL (INCLUDING RECYCLED MATERIAL)
  - 30mm MINIMUM THICKNESS SURFACE COURSE OVERLAY WITH REGULATING AREAS
  - TYPE 1A FOOTWAY CONSTRUCTION
  - EXISTING PAVEMENT TO BE BROKEN UP AND REMAIN INSITU WITH 100mm TOP SOIL & SEED TOPPING
  - VERGE AREAS TO BE 100mm MINIMUM THICKNESS TOP SOIL WITH GRASS SEEDING
  - 'NO DIG' CONSTRUCTION (WITHIN TREE ROOT PROTECTION ZONE) (SEE DETAIL E FOR CONSTRUCTION)
  - PROPOSED GULLY
  - PROPOSED SOAKAWAY (SEE NOTE 6 OPPOSITE)
  - PROPOSED LEVEL
  - PC1 PRECAST CONCRETE KERB WITH 100mm KERB FACE
  - D1 PRECAST CONCRETE DROPPER KERB x1 FLUSH (FINISH) + TAPER KERB x2
  - D2 PRECAST CONCRETE DROPPER KERB x2 (FLUSH FINISH) + TAPER KERB x2
  - 2 5m STREET LIGHTING COLUMN WITH WRFL 'STELA' LANTERN WITH 18 LEDS (NIRBUY 3000 RNN) LANTERN TO BE FITTED WITH MAYFLOWER 6 PIN NEMA SOCKET AND MOUNTED ON A 0.5m BRACKET ARM WITH A 5° TILT (MOBITEX GPRS SUB-MASTER UNIT TO BE CONFIRMED) ARROW INDICATES DIRECTION OF LANTERN HEAD. LANTERNS SHALL BE EQUIPPED WITH DALI PROG XTREME DIMMING FACILITY.
  - 14 AS ABOVE BUT WITH 2 No. 'STELA' LANTERN WITH 18 LEDS (NIRBUY 3000 RNN) MOUNTED ON 2 No 0.5m DOUBLE BRACKET ARM.
  - COLUMNS 8, 9, 13, & 14 TO HAVE GLASDON NEOPOLITAN 150 BOLLARDS ON BOTH SIDES OF COLUMN (No's 17 & 18 No. BOLLARD) TO PROTECT COLUMN FROM DAMAGE BY PARKING VEHICLES.
  - 100mmØ TWIN WALL UPVC DUCT (ADDITIONAL TO REQUIREMENTS IN NOTE 9 FOR DUCTING BETWEEN STREET LIGHTING COLUMNS).
  - ROUTE OF DIRECT BURIED CABLE
  - HCC STANDARD TYPE 2 DRAWPIT DRG No. HCC10/L/075.



TOTAL SPACES:  
120 STANDARD SPACES AND  
4 DISABLED SPACES

- This map is based upon Ordnance Survey material with the permission of the Ordnance Survey on behalf of the Controller of Her Majesty's Stationery Office © Crown Copyright. Unauthorised reproduction infringes Crown copyright and may lead to prosecution or civil proceedings.  
Winchester City Council Licence No. 100018301
- NOTES**
- THIS DRAWING IS INDICATIVE ONLY AND SHOULD NOT BE SCALED.
  - ALL PARKING BAYS SHOWN ARE A MINIMUM OF 2.4m WIDE AND 4.8m LONG.
  - FOR KERB DETAILS SEE HAMPSHIRE COUNTY COUNCIL (HCC) STANDARD DETAIL: HCC10/C/10.
  - FOR CROSS SECTIONS AND ROOT PROTECTION ZONE DETAIL SEE DRAWING NO: RPF/132/006A.
  - LOCATION OF PROPOSED DEVELOPMENT AND ASSOCIATED PATHS HAVE BEEN TAKEN FROM ARCHITECTS DRAWING NO: PD101
  - SOAKAWAYS TO BE TYPE S2(G) TO HCC STANDARD DETAIL NO: HCC10/D/075. GULLIES TO BE TYPE 1 TO HCC STANDARD DETAIL NO: HCC10/D/015.  
S1=2.4mØ 2.5m(D) S2=3.0mØ 2.5m(D)  
S3=3.0mØ 2.5m(D) S4=3.0mØ 2.5m(D)
  - ALL PIPES BETWEEN GULLIES AND SOAKAWAYS TO HAVE TYPE Z BED AND SURROUND WITH LESS THAN 0.7m COVER. ALL PIPES DEEPER TO HAVE GRANULAR BED & SURROUND WITH AS DUG MATERIAL COMPACTED IN LAYERS TO TOPSOIL LEVEL.
  - FOOTWAY CONSTRUCTION TO BE TYPE 1A TO HCC STANDARD DETAIL NO: HCC10/C/045.
  - ALL COLUMNS TO HAVE 100mmØ UPVC TWIN WALLED DUCTING BETWEEN COLUMN POSITIONS AND LINKED ACROSS ENTRANCE ROAD TO REVISED ENTRANCE RADIUS. REINSTATEMENT TO BE GRANULAR BED & SURROUND AND AS-DUG MATERIAL IN VERGE AREAS AND TYPE D(h) REINSTATEMENT TO HCC STANDARD DETAIL HCC10/C/090 UNDER CARRIAGEWAY. LIGHTING COLUMNS TO BE ERECTED AS DETAILED ON HCC STANDARD DETAIL NO: HCC10/L/045.
  - BOLLARD AT CAR PARK ENTRANCE AND TO PROTECT LIGHTING COLUMNS. TO BE GLASDON NEOPOLITAN 150 BOLLARD WITH CLASS 1 RED REFLECTIVE BANDING ERECTED IN ACCORDANCE WITH HCC STANDARD DETAIL NO: HCC10/C/130.
  - ALL EXISTING GRASSED VERGE TO BE CAR PARKING TO HAVE 100mm TOP SOIL STRIPPED & STOCK PILED FOR FUTURE USE. ALL OTHER EXCAVATION ARISING TO BE DISPOSED OFF SITE.
  - CABLING SHALL BE INSTALLED TO HCC10/L/070 (DUCTED UNDER PARKING AREAS & DIRECTLY BURIED IN SOFT AREAS).
  - FEEDER PILLAR SHALL BE INSTALLED TO HCC10/L/090. COLUMNS AND CABLE TERMINATIONS SHALL BE INSTALLED TO HCC10/L/080 AND HCC10/L/085.

Rev	Description	Date	Drawn
F	ISSUED TO TENDER	MAY 16	RB
E	ELECTRICAL CABLE SIZES INCREASED TO 6mm	06.03.16	JEMR
D	LIGHTING COLUMN SYMBOL AMENDED	31.03.15	JEMR
C	LIGHTING CABLING & ADDITIONAL NOTES ADDED	15.03.15	JEMR
B	PAVEMENT CONSTRUCTION AMENDED	10.09.14	JEMR
A	DETAILED DESIGN LAYOUT	24.07.13	NM



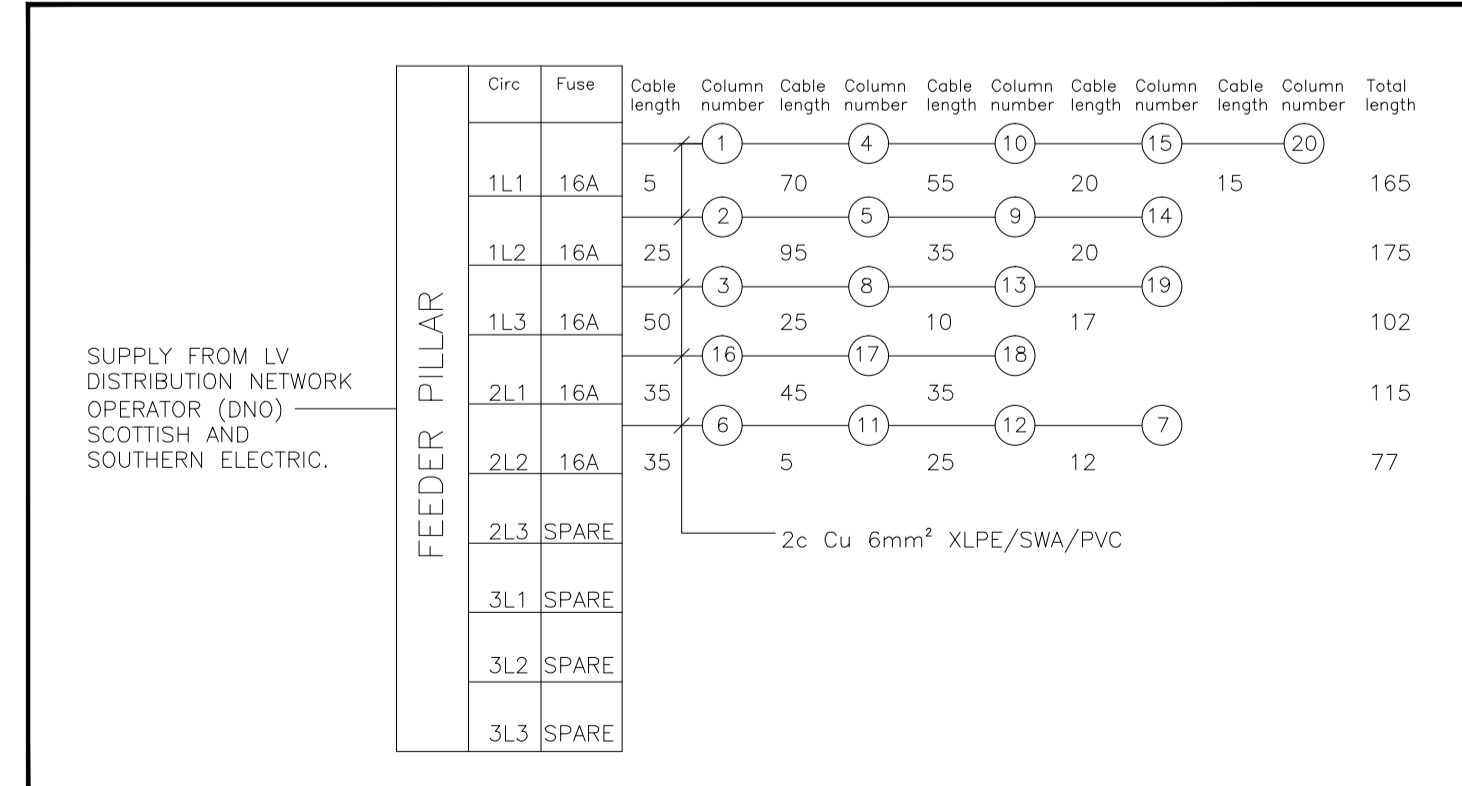
# Winchester City Council

OPERATIONS GROUP  
ACCESS & INFRASTRUCTURE  
City Offices  
Colebrook Street  
Winchester,  
SO23 9LJ.

Project:  
JUBILEE HALL CAR PARK  
BISHOPS WALTHAM

Title:  
SCHEME LAYOUT

Scale: 1:200	Date: 29/07/13
Drawn: NM	Checked: PSF
DRG. No. RPF/132/005	Status: REV F



SCHEMATIC DIAGRAM